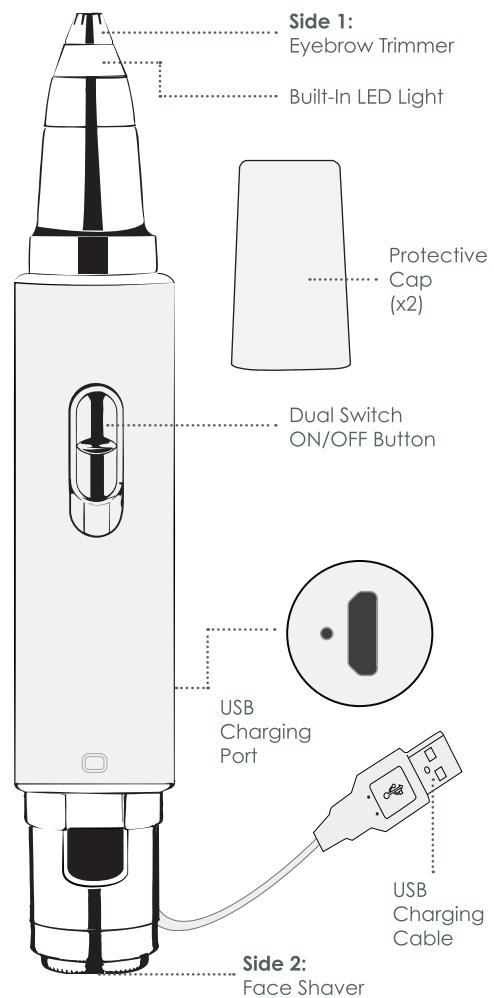




INTRODUCING Sonic Trim Duo



CHARGING

BEFORE FIRST USE

Sonic Trim Duo is cordless and rechargeable.

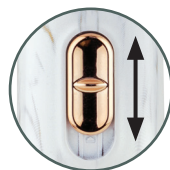
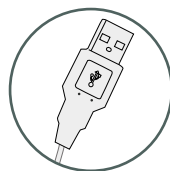
Before use, charge fully for 12 hours, even if the indicator light has changed color. Sonic Trim Duo can run up to 3 hours on a single charge.

CHARGING

To recharge, insert the included USB Cord into the port on the side of the Sonic Trim Duo. Then connect the USB end of the charging cord to a USB port of a computer or a USB wall adapter and then plug into an electrical outlet. As the Sonic Trim Duo charges a tiny red light will come on to indicate charging is in progress, and it will turn green once your device is fully charged. Please be sure to allow the Sonic Trim Duo to charge for the full 12 hours, even if the charging light comes off before the 12 hours, allow it to charge for the full 12 hours. Recharge the Sonic Trim Duo only as needed and up to 12 hours only. DO NOT overcharge which can shorten the battery life. Disconnect the Charging Cord when not charging the device. Sonic Trim Duo should be powered OFF and cannot be used while charging. Do not charge Sonic Trim Duo for more than 24 hours.

POWERING OFF AND ON

Slide the switch of Sonic Trim Duo in one of two directions to start either Side 1 or Side 2.



STEP BY STEP

READY TO USE:

Once you have assured of the full charge of your Sonic Trim Duo device, you can proceed with your treatment.

1. Remove one of the protection caps at a time when ready to use.
2. Push the switch button in the direction of the Side you intend to use.

Note The LED light will light up automatically to facilitate precision trimming.



3. Apply the treatment tip to your skin lightly and move it slowly.
 - For eyebrow trimming, we recommend pulling the skin tight and moving the device in small, circular movements.
 - For facial hair, removal we recommend using Sonic Trim Duo in light circular motions.

The sharp stainless steel precision blades of Sonic Trim Duo will deliver a perfect shave close to your skin without causing any pulls, nicks, redness or irritation.

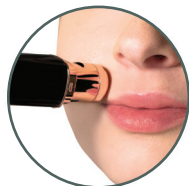


4. Place back the switch button into the middle position when finished with your eyebrow trimming or facial hair removal. Reinsert the protective cap for storage.

FEATURES & BENEFITS

EASY PEACH FUZZ / VELLUS HAIR REMOVAL:

Getting rid of the thin, vellus hair on your face will help to make your skin feel healthier, look more radiant, improve your serums and creams absorption and ease your makeup application for a flawless look. Areas to target in particular are:



UPPER LIP



TEMPLE & SIDEBURN



CHEEK



CHIN

MAINTENANCE & CLEANING:

Never put the whole Sonic Trim Duo device underwater.

In order to clean up hair out of the trimming tips if needed, you may separate the very end of each tip by turning it slightly clockwise and pulling it away from the device. Do the opposite do replace it.

These parts coming off can be brushed off or put under running water in order to be cleaned.



EXPERT ADVICE

SOME TIPS FOR A GREAT EYEBROWS TRIMMING:

- If unsure what needs to go: feel your face and particularly your brow bone. This is the right location for your eyebrows - what needs to go is hair between your brows, on the temples, forehead, and close to the lids.
- Brush your eyebrows hair up prior to start trimming so to get a better view of what you are working with.
- Hold your skin taut when trimming.
- Do not use a magnifying mirror as these can give you a misleading view. When it comes to eyebrows shaping an overall structure is more important.
- Take a step back, again and again, during the process of trimming your eyebrows so to get an overall view.
- Take advantage of the other side of Sonic Trim Duo, the facial hair removal side, to remove the vellus, peach fuzz hair around your eyebrows, forehead and temples. This will help make your eyebrow look finished and beautiful.

TAKE SONIC TRIM DUO WITH YOU WHEREVER YOU GO AND ON TRIPS:

We made Sonic Trim Duo no much bigger than your regular lipstick, USB rechargeable and travel-friendly (In-flight Safety Compliance) as its rechargeable NiMH battery is safe for travel in carry-on luggage or checked baggage (lithium-free).



WARNINGS & WARRANTY

BASIC SAFETY PRECAUTIONS.

When using electrical products, especially when children are present, basic safety precautions should always be taken. **IF YOU THINK THE POWER IS OFF WHEN THE SWITCH IS OFF. YOU ARE WRONG.** If the plug is in, the power is on. Unplug electrical appliances when you are not using them.

DANGERS.

To reduce the risk of electrocution: **DO NOT** get the product or Charging Cable wet or immerse in water. Keep this product away from open flame or flammable aerosol products. The Device is not suitable for use in the presence of a flammable anesthetic mixture with air or oxygen or nitrous oxide.

WARNINGS.

To reduce the risk of burns, electrocution, fire or injury to persons: Close supervision is necessary when this product is used by, on, or near children or physically challenged persons. Use this product only for its intended use as described in this User Guide. **DO NOT** use this product where oxygen is being administered. The product has no serviceable parts. Never attempt to open the Device Handle for any reason. **DO NOT** disassemble, heat above 600°C (1400°F) or incinerate.

IMPORTANT CAUTIONS.

This is not a Medical Device and is not intended to treat medical conditions. If you are under a doctor's care for any skin condition. If you think you may have a skin condition or if you have very sensitive skin, consult your physician before using this product. This product uses magnets which may affect internal medical devices such as pacemakers. Keep away from internal medical devices. This Device is electrical and contains small parts. Keep out of reach of children. **THIS PRODUCT IS NOT DESIGNED OR INTENDED PRIMARILY FOR CHILDREN 12 YEARS OF AGE OR YOUNGER.**

If you have any medical concerns about using Sonic Trim Duo, please consult your dermatologist before use.

If any of the components are damaged (Sonic Trim Duo Device Handle, or USB Charging Cord) **DO NOT** use. **DO NOT** attempt to open or service components. Email Michael Todd Beauty customer service at customerservice@michaeltoddbeaauty.com

REGISTRATION REQUIREMENT.

YOU MUST REGISTER YOUR PRODUCT WITHIN 90 DAYS OF PURCHASE IN ORDER TO OBTAIN THE WARRANTY. GO ONLINE TO WWW.WARRANTYMICHAELTODDBEAUTY.COM AND COMPLETE THE INFORMATION REQUIRED FOR REGISTRATION.

WARRANTY LIMITATIONS.

TO THE EXTENT PERMITTED BY LAW, THIS WARRANTY AND THE REMEDIES SET FORTH ARE EXCLUSIVE AND IN PLACE OF ALL OTHER WARRANTIES, REMEDIES AND CONDITIONS, WHETHER ORAL OR WRITTEN, STATUTORY, EXPRESS OR IMPLIED. MICHAEL TODD BEAUTY ("MICHAEL TODD") DISCLAIMS ALL STATUTORY AND IMPLIED WARRANTIES, INCLUDING WITHOUT LIMITATION WARRANTIES OF MERCHANTABILITY AND FITNESS FOR A PARTICULAR PURPOSE AND WARRANTIES AGAINST HIDDEN OR LATENT DEFECTS TO THE EXTENT PERMITTED BY LAW. IN ALL EVENTS, MICHAEL TODD LIMITS THE DURATION AND REMEDIES OF SUCH WARRANTIES TO THE DURATION OF THIS EXPRESS WARRANTY AND AT MICHAEL TODD'S OPTION THE REPAIR OR REPLACEMENT SERVICES DESCRIBED BELOW.

LIMITATION OF LIABILITY.

EXCEPT AS PROVIDED IN THIS WARRANTY AND TO THE MAXIMUM EXTENT PERMITTED BY LAW, MICHAEL TODD IS NOT RESPONSIBLE FOR DIRECT, SPECIAL, INCIDENTAL OR CONSEQUENTIAL DAMAGES RESULTING FROM ANY BREACH OF WARRANTY OR CONDITION, OR UNDER ANY OTHER LEGAL THEORY, INCLUDING BUT NOT LIMITED TO LOSS OF USE; LOSS OF REVENUE; LOSS OF BUSINESS; LOSS OF OPPORTUNITY; LOSS OF GOODWILL; LOSS OF REPUTATION; OR ANY INDIRECT OR CONSEQUENTIAL LOSS OR DAMAGE HOWSOEVER CAUSED INCLUDING THE REPLACEMENT OF EQUIPMENT AND PROPERTY. THE FOREGOING LIMITATION SHALL NOT APPLY TO DEATH OR PERSONAL INJURY CLAIMS, OR ANY STATUTORY LIABILITY FOR INTENTIONAL AND GROSS NEGLIGENT ACTS AND/OR OMISSIONS.

WHAT IS COVERED BY THIS WARRANTY.

MICHAEL TODD warrants this product against defects in materials and workmanship when used normally in accordance with MICHAEL TODD'S guidelines (including technical specifications, user manuals and service communications) for a period of THREE (3) YEARS from the date of original retail purchase ("Warranty Period"). This warranty applies only to a purchase of the Product in the United States or Canada from MICHAEL TODD or an authorized reseller, is valid for the original end user of the Product only and cannot be transferred under any circumstances.

NEED MORE INFO?

The entire operating manual including safety, care and warranty information is available at www.sonictrimduomanual.com
Contact customer service at 772-800-7654 or customerservice@michaeltoddbeauty.com

© 2021 MICHAEL TODD BEAUTY LP. All rights reserved.